



PROGETTO CMR
INTERNATIONAL



INNOVATION



SPECIALIZATION



INTEGRATION

we believe
our work shapes a better world

we believe

our work shapes a better world

we design

the future fostering sustainable development

we believe

our work shapes a better world

we design

the future fostering sustainable development

we shape

the small and large transformations defining future scenarios



we believe

our work shapes a better world

we design

the future fostering sustainable development

we shape

the small and large transformations defining future scenarios

we drive

innovation through research for people, businesses, and communities

we believe

our work shapes a better world

we design

the future fostering sustainable development

we shape

the small and large transformations defining future scenarios

we drive

innovation through research for people, businesses, and communities

we respect

people, environment, culture, diversity

Our galaxy

A constellation of innovation
Empowering Success



PROGETTO CMR INTERNATIONAL

A group of integrated companies active in all stages of a project, from the concept design to the final delivery.

Progetto CMR International is the operating holding of the most important Italian group in integrated design. The Group includes Agevola 360, Progetto Design & Build, Progetto CMR, Progetto CMR Saudi, Dontstop Architettura, EnergySave, InFire, Sportium and Stain Engineering, complementary to each other and each specialized in specific areas of architecture, engineering, design, construction and technical consultancy, integrated and coordinated by the holding.

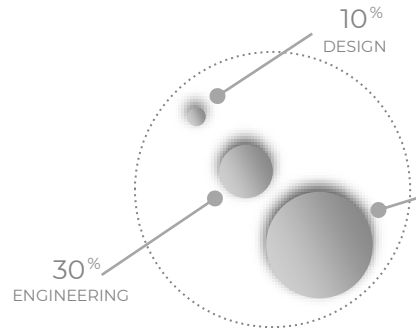


PROGETTO CMR
INTERNATIONAL



The Group at a glance

Uniting Expertise,
Shaping the Future Together.



4000+
PROJECTS COMPLETED
WORLDWIDE

60%
ARCHITECTURE

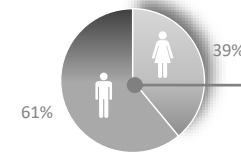
20+
SECTORS
WE OPERATE IN



20+
LEED / BREEAM
CERTIFIED PROJECTS

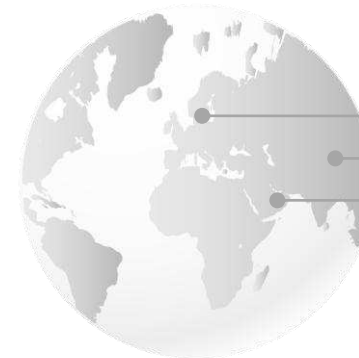
€45+ MLN
REVENUE

300+
SPECIALIZED STAFF
WORLDWIDE



52% ARCHITECTS
27% ENGINEERS
7% DESIGNERS
14% SPECIALIZED STAFF

10+
INTERNATIONAL
PRESENCE
& NETWORKS



EUROPE
ASIA
MIDDLE EAST

Our world

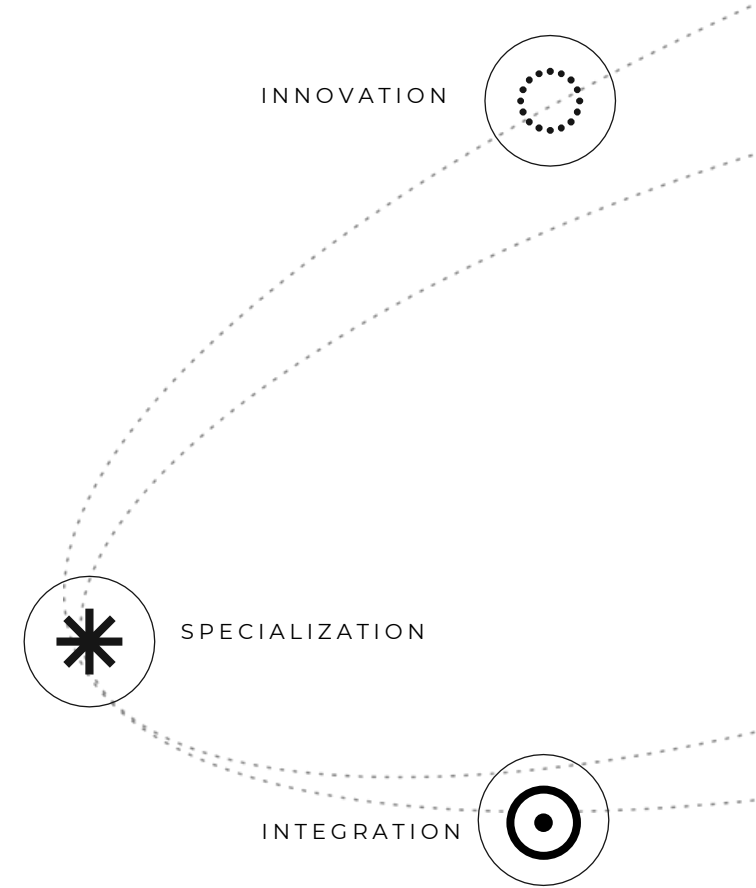
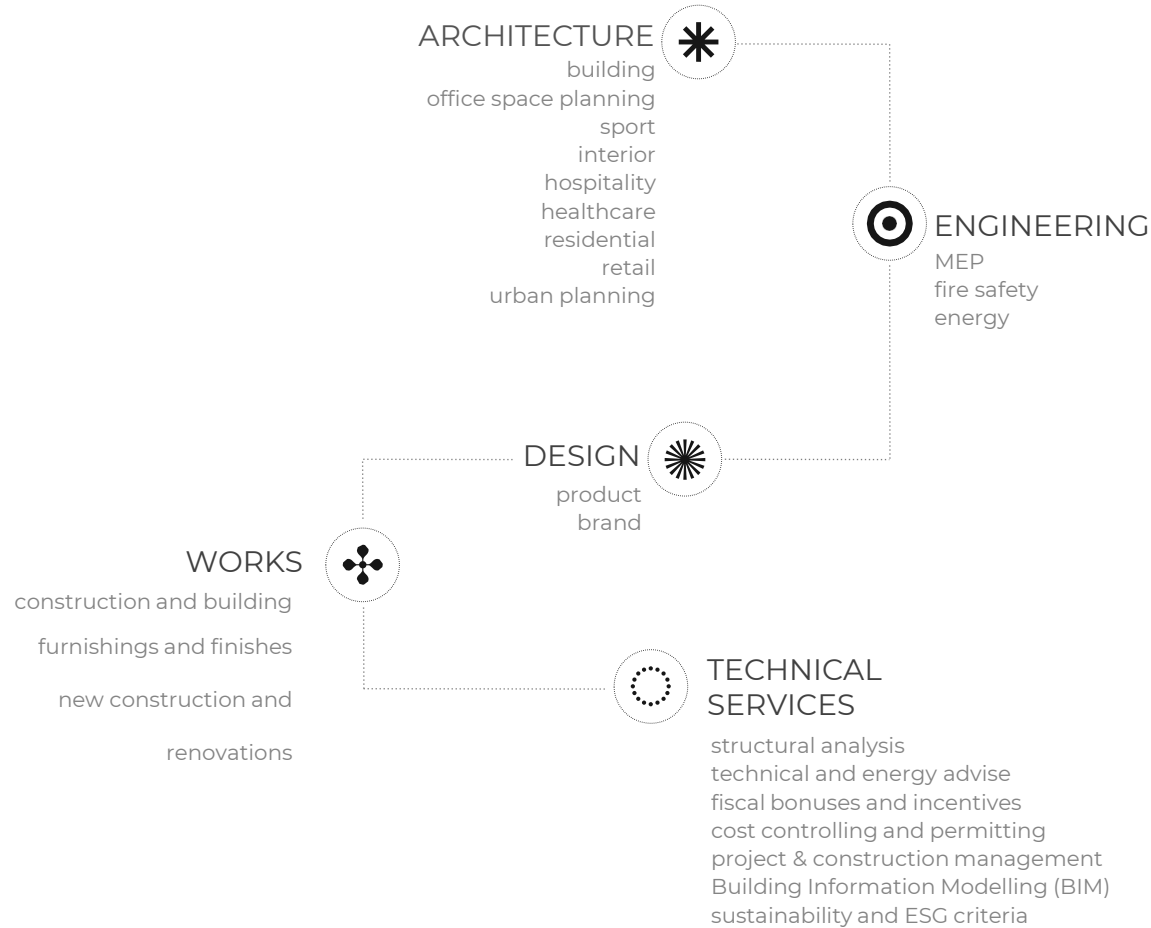
Our approach



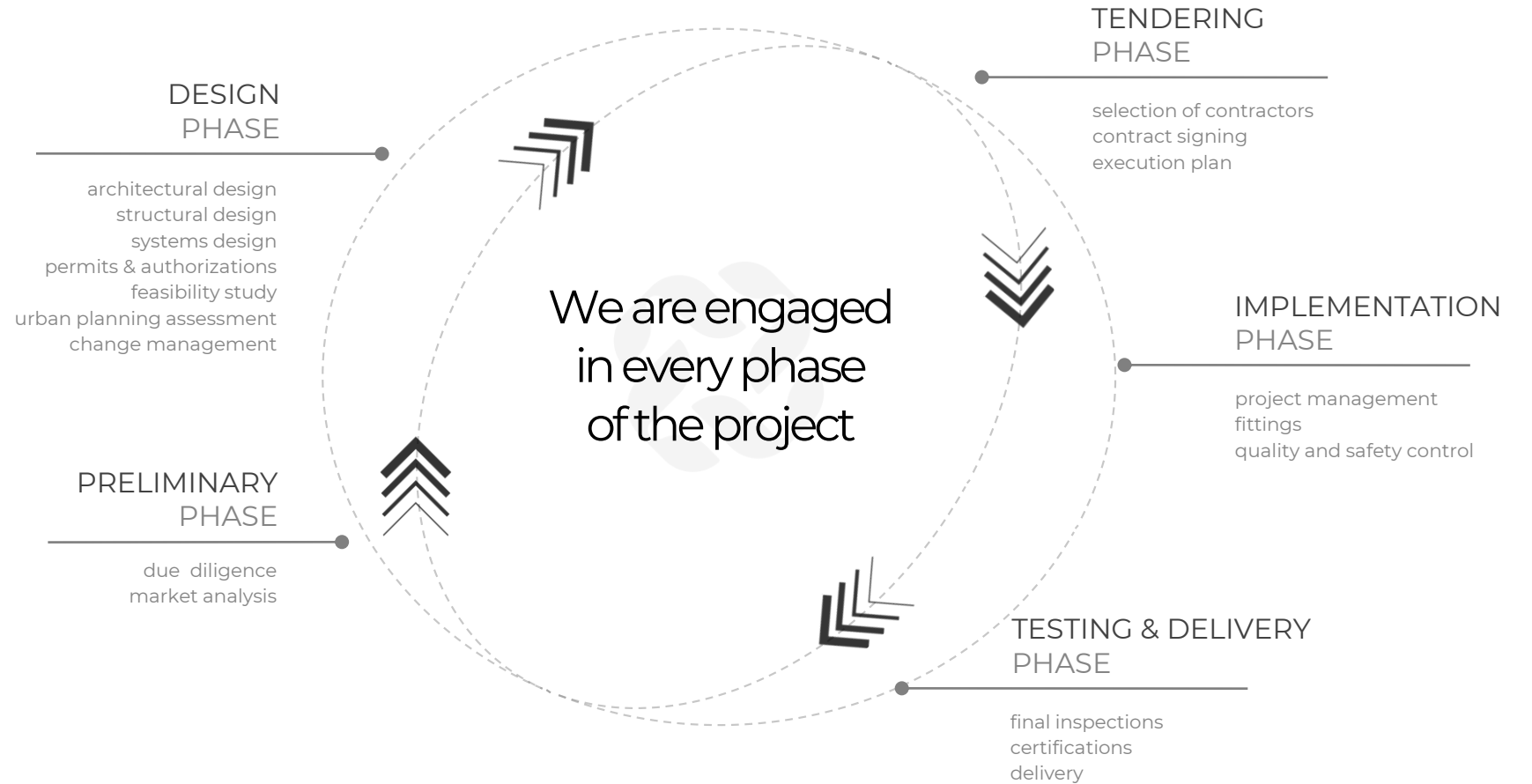
Our projects blend innovation, rigorous techniques, and creative exploration through a collaborative, multidisciplinary process to address contemporary challenges.

We engage clients from the start to understand their needs, guiding the design toward exceptional results.

We prioritize social and environmental features in every project, aligning with the UN's sustainable development goals.



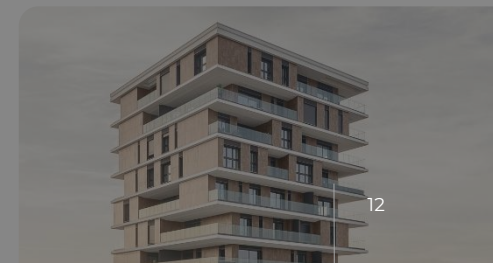
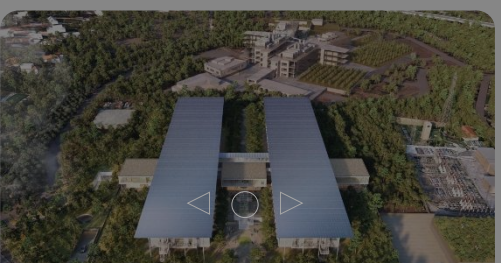
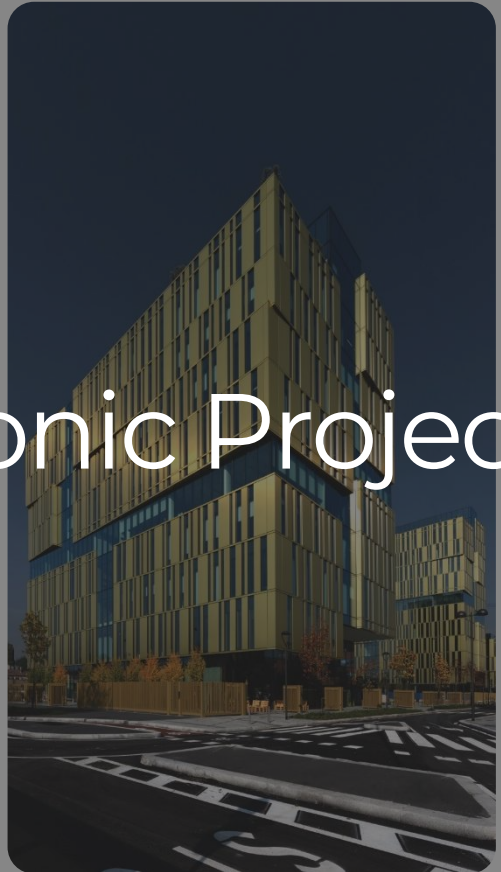
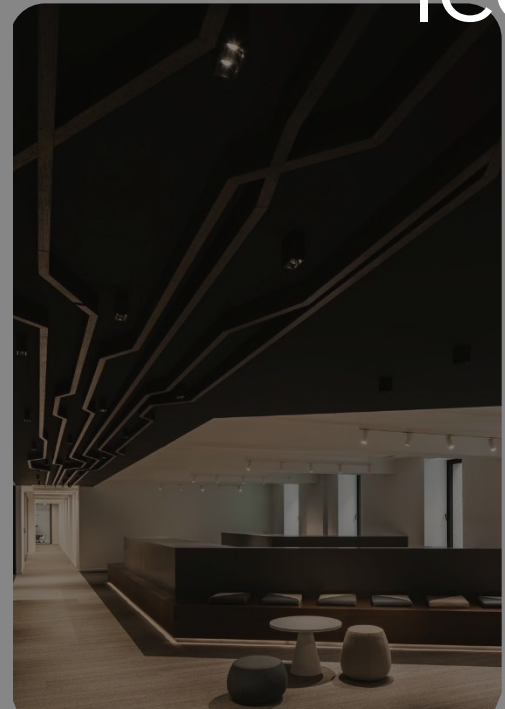
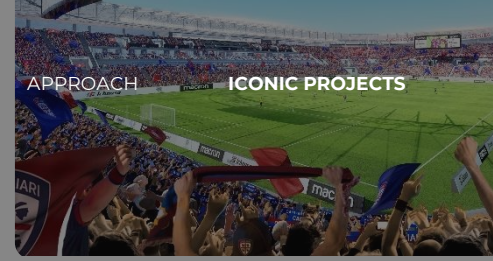
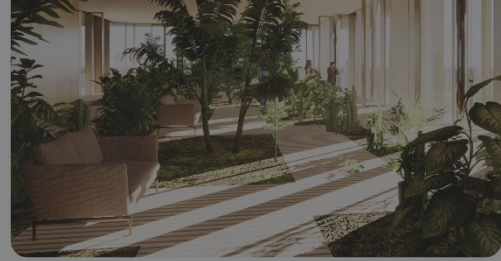
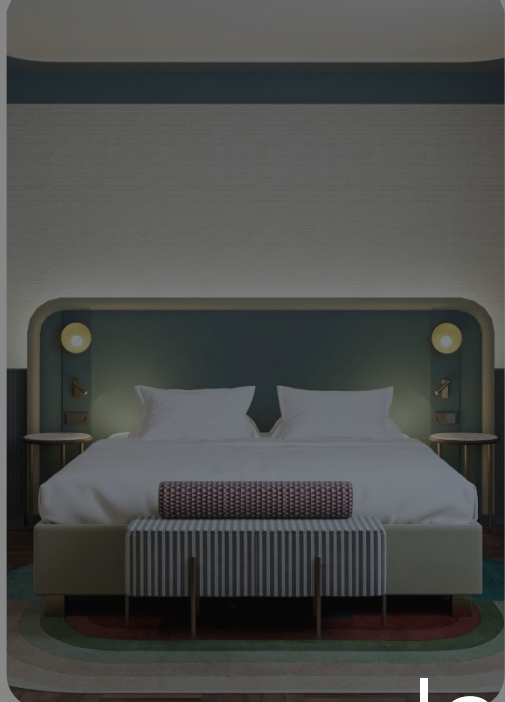
Our activities



We deliver comprehensive, 360-degree solutions, engaged in every phase of the real estate project.

Our expertise spans architecture, engineering, and design, ensuring seamless integration at every step.

We guarantee precise oversight of time, cost, and quality, ensuring the success of every project phase.



Iconic Projects

The Sign Complex

Covivio

Milan - Italy

40,000 sqm

2016 - 2025

Use: Office, Retail

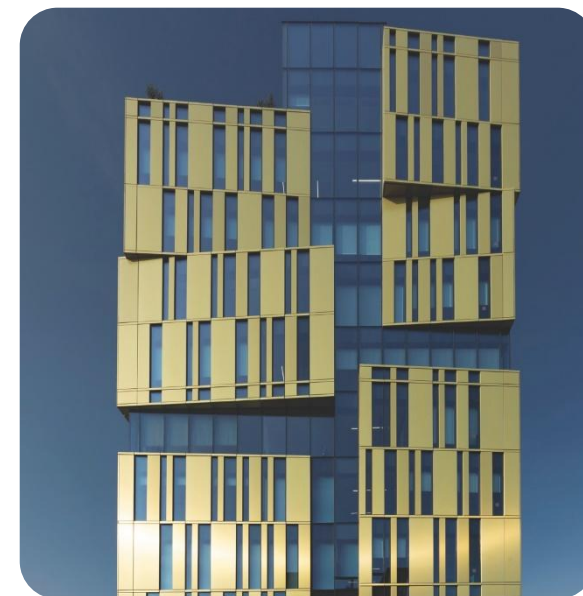
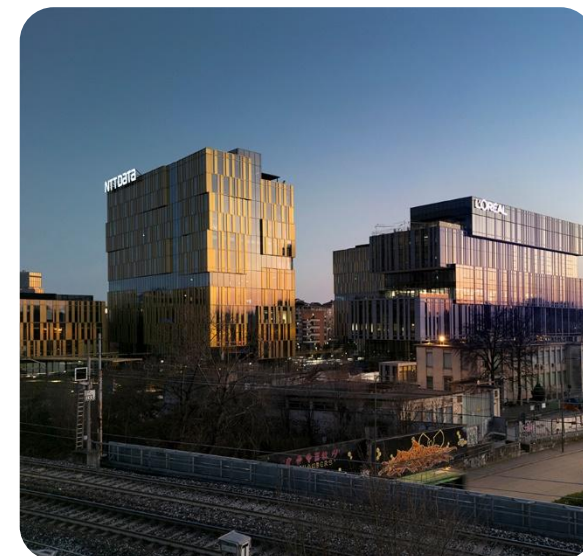
Certifications: BiodiverCity, LEED Platinum

Awards: Assolombarda Awards (2024), Metra Award (2022),

Re Italy (2022), Urbanfile Award (2021)

PROGETTO CMR





THE SIGN COMPLEX

The project involves the creation of an innovative building complex and the redevelopment of a 25,000 sqm industrial area from the 1950s. The aim is to integrate the area into the surrounding district, improving its overall quality. The facades of the three new buildings feature golden strips alternating with glass, creating a dynamic and vibrant effect. The design includes a transparent "Sign" running along the facades and extending into the paving of the 4,000 sqm Smart Square, enhanced with trees and technological features, serving as a recognizable urban landmark.



Findomestic HQ

BNP Paribas

Florence – Italy

30,000 sqm

Under construction >> 2025

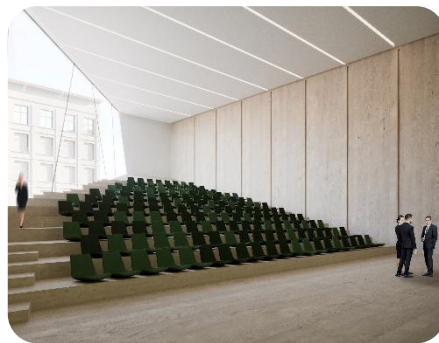
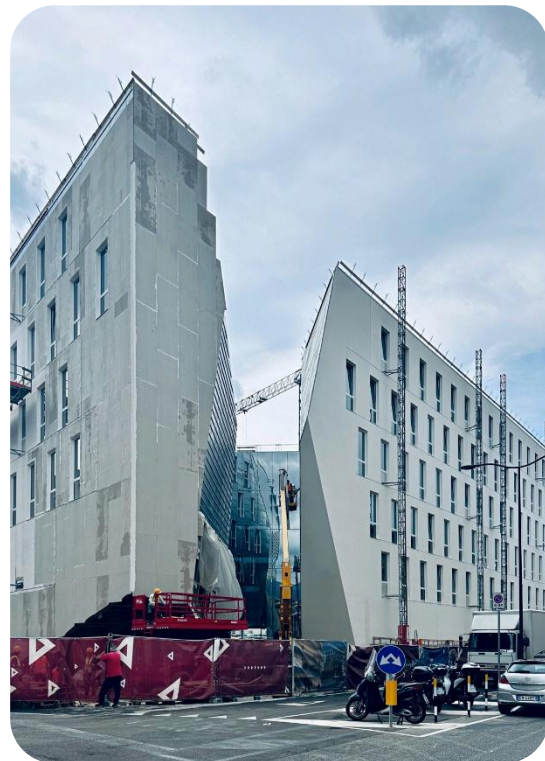
Use: Office

Certifications: LEED Gold New Construction

In collaboration with Studio Mantero

FINDOMESTIC HQ

Business center in the Novoli district (former industrial area), 30,000 sqm. area, including 4,000 sqm. of equipped green space. The building, powered by renewable sources and LEED Gold New Construction certified, faces a square and park for public use. The exterior front, a “block” of white stone, evokes the Florentine Renaissance. The glazed interior side opens onto the courtyard. Natural light amplifies the sun’s benefits on health and reduces overheating of the building in Florence, a victim of heat island effects. It will house offices, auditorium, restaurant and cafeteria, gymnasium, healthiness center, parking spaces with electric charging and 120 bicycle spaces.



KPMG Rome HQ

Rome - Italy

24,000 sqm

2021

Use: Office

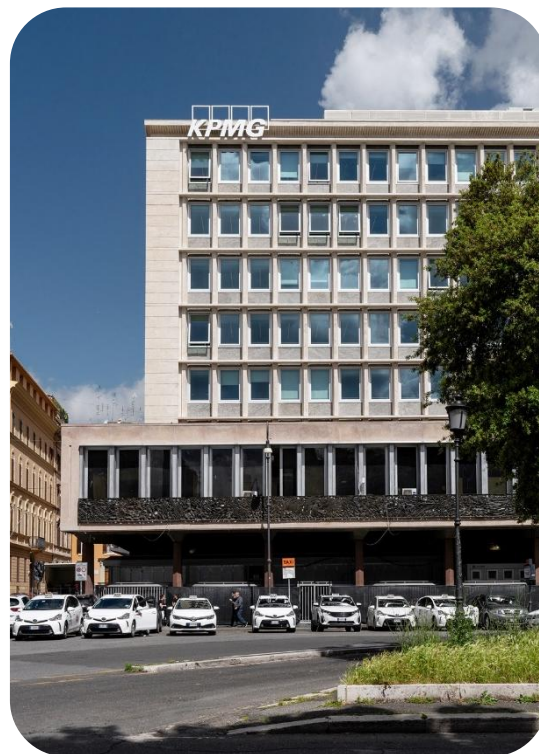
Certifications: LEED Platinum

PROGETTO CMR

PROGETTO D&B

KPMG HQ

The design of the new KPMG office in Rome is about experimentation, development, future: it's a breaking point between a "before", when working followed conventional office hours, and an "after" that is able to welcome and manage a new way of working. Quality, in its broader sense, and the quality of the experience offered to workers guided the design, where areas dedicated to sharing and collaboration emerge: project rooms, meeting rooms for clients, phone booths for call and video conferences, together with large informal lounges and terraces. As evidence of the need to ensure a constant dialogue with external dimension, great attention was given to the glass partitions, to guarantee natural lighting, and to green elements, thanks to the creation of small courtyards that encourages visual contact with natural elements.



Tinexta Milan HQ

Milan – Italy

5,000 sqm

2024

Use: Office

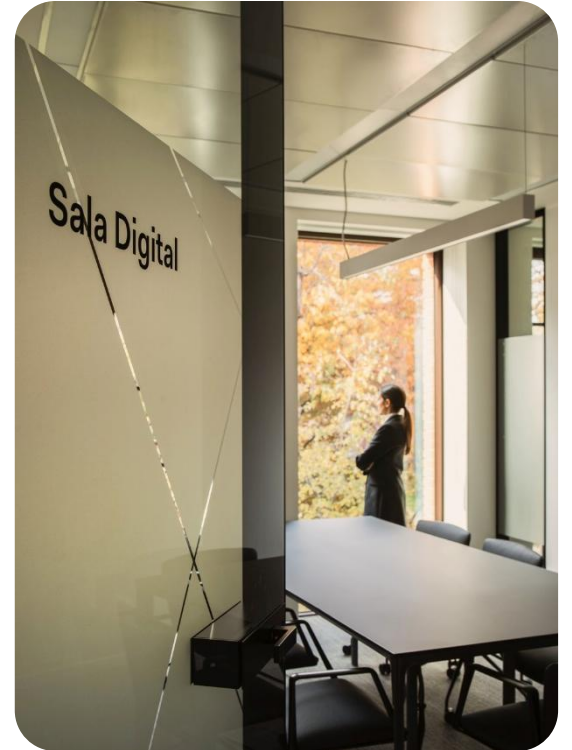
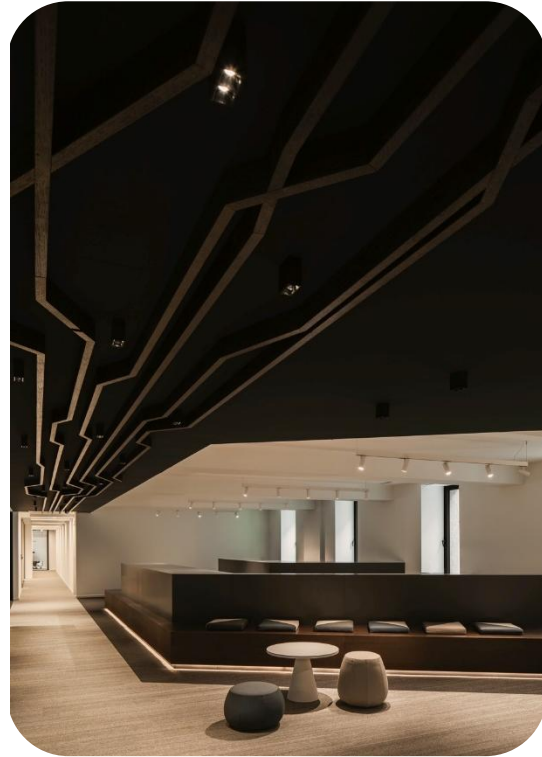
Think Next

PROGETTO CMR

PROGETTO D&B

INFIRE





TINEXTA HQ

In the heart of Milan, Tinexta's offices span two floors, totaling 5,000 square meters. The spaces are divided between operational and managerial areas, with a focus on promoting collaboration and innovation. The "innovation center," a 200-square-meter multimedia space, is designed to foster idea-sharing and a sense of belonging among employees. Each group company also has individual "smart areas" and a spacious 190-square-meter break area, designed to promote well-being and socialization.

Abitare in Maggiolina

Abitare In

Milan – Italy

10,000 sqm

2019

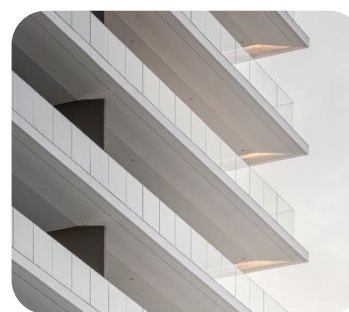
Use: Residential



DONTSTOP.ARCH

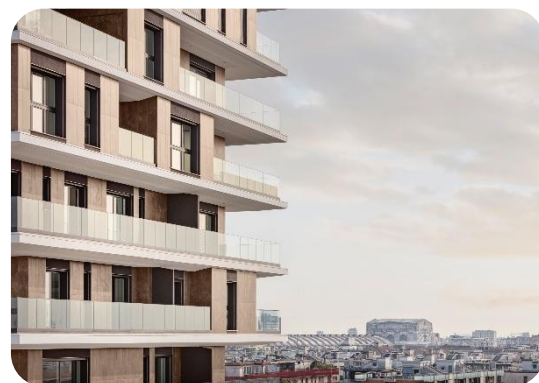
INFIRE





ABITARE IN MAGGIOLINA

The Tower building features 15 residential floors with a design based on 16 overlapping plateaus, maintaining a strong connection with the surroundings. Each floor's shape changes without altering the building's image. The Maggiolina Gardens building breaks up its volume into smaller structures arranged in a staggered pattern. The height is softened by varying double heights, and the apartment layouts and loggias create dynamic plays of solid and void on the facade.



New Cagliari Stadium

Cagliari Calcio

Cagliari – Italy

25,000 – 30,000 seats

2018 >> in progress

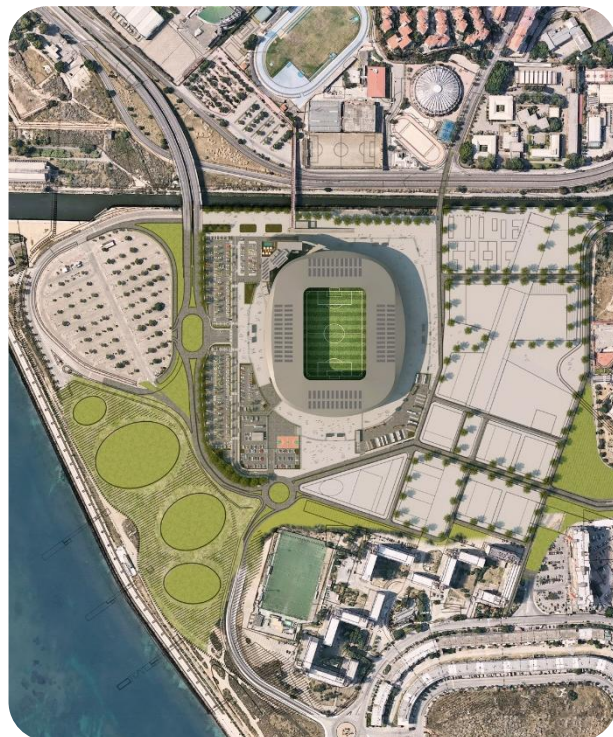
Use: Sport (Football)

In collaboration with Manica architecture



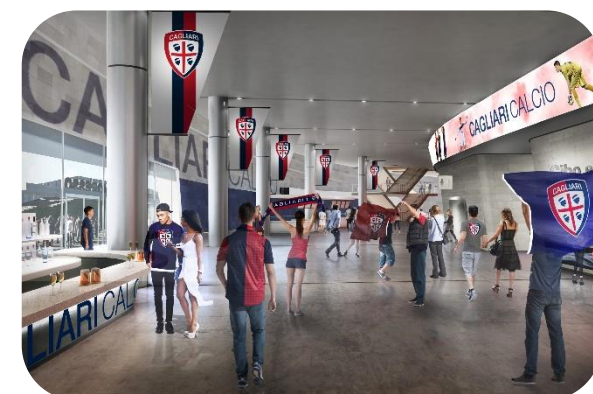
SPORTIUM

INFIRE



NEW CAGLIARI STADIUM

The project aims to create a smart football stadium seamlessly integrated into its surroundings, emphasizing flexibility, sustainability, and a strong connection to the local context. Designed with fans in mind, the stadium offers an excellent viewing experience and includes multifunctional spaces for hospitality, entertainment, and catering, ensuring year-round use. Reflecting the colors and materials of Cagliari and Sardinia, the stadium will become a city and regional icon.



Stadio dei Pini

Comune di Viareggio

Viareggio (LI) - Italy

25,000 sqm

2,500 seats

Under construction >> 2025

Use: Sport (Athletics, Football)

In collaboration with Manica architecture



SPORTIUM

STAIN ENG.

DONTSTOP ARCH.



STADIO DEI PINI

The architectural concept of the new Stadio dei Pini is based on the research of a symbolic element able to reunite citizens of different generations and with different interests, in order to give life to a complex that can inspire a sense of belonging in the inhabitants of Viareggio. The project brings new light to the existing building, giving back a new modern and sustainable structure. The redevelopment project operates on a larger scale, becoming a real example of urban redevelopment: huge attention is paid to the natural surrounding environment, which the new stadium is in dialogue and harmony with.



Stadio del Nuoto di Taranto

Comune di Taranto

Taranto - Italy

4,600 sqm

2,450 seats

Under construction >> 2025

Use: Sport (Swimming)

SPORTIUM

STAIN ENG.

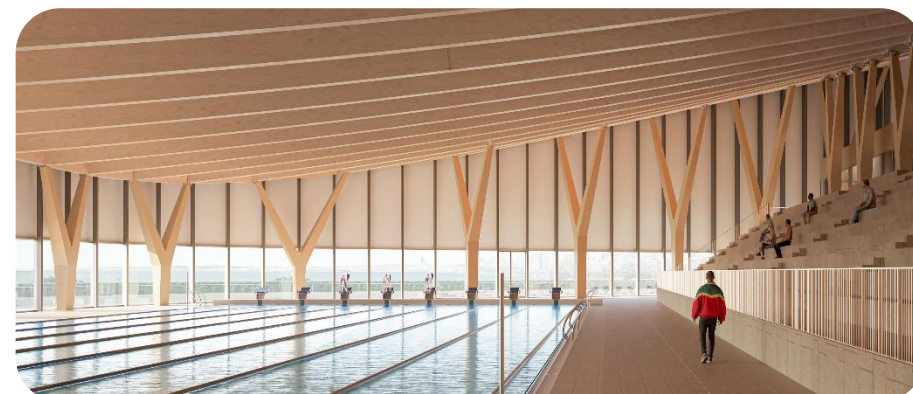
INFIRE



STADIO DEL NUOTO DI TARANTO

The new Swimming Stadium in Taranto, to be completed by 2025, is part of a broader plan to enhance the city ahead of the 2026 Mediterranean Games. Covering 12,000 sqm, it will feature two 50-meter Olympic pools with seating for 980 and 1,000 spectators.

The multifunctional facility will be open year-round to the local community, offering spaces for courses, training, recreational activities, medical offices, and a café, with a strong focus on accessibility and environmental sustainability. Spread over three levels, the complex will follow the natural slope of the land and provide direct access to the coast, integrating green spaces and creating a public square that connects the stadium to the city.



Harmonic Innovation Hub

Entopan

Tiriolo (CZ) – Italy

40,000 sqm

Under construction >> 2025

Use: Office, Co-working, Co-living, Welfare, Education, Training

PROGETTO CMR

INFIRE



HARMONIC INNOVATION HUB

The visionary concept of the Harmonic Innovation Hub draws inspiration from the tremendous history of Magna Grecia and, from this point, it develops in order to lay the foundations for the new “temple” devoted to harmony, innovation and future: a 2.0 campus, whose innovative strength spreads outwards also producing a profound renovation of the existing country. The Hub aims to be an ideal environment in which to stimulate connections and growth, open to young people, startappers and universities, thanks to the variety of spaces designed to promote that exchange of ideas and thoughts which is the basis of each research and innovation process. An example of clear, flexible and dynamic architecture, which opens itself to the external world in a continuous flow.



MI.CA.HO.

OHPA

Trani - Italy

63,000 sqm Land Area

35,000 sqm Hospital

2023 concept >> in progress

Use: Healthcare

Awards: The Plan Awards (2023)

MISERICORDIA CANCER HOSPITAL

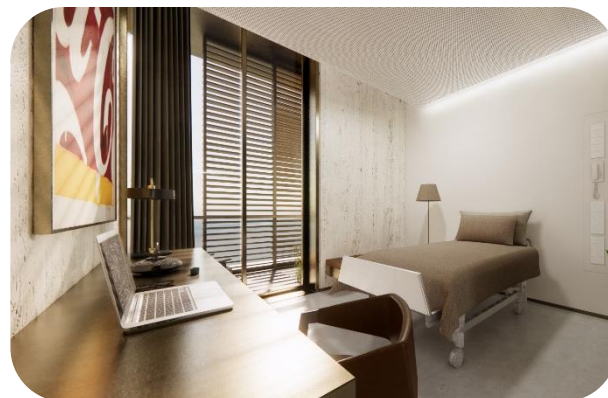
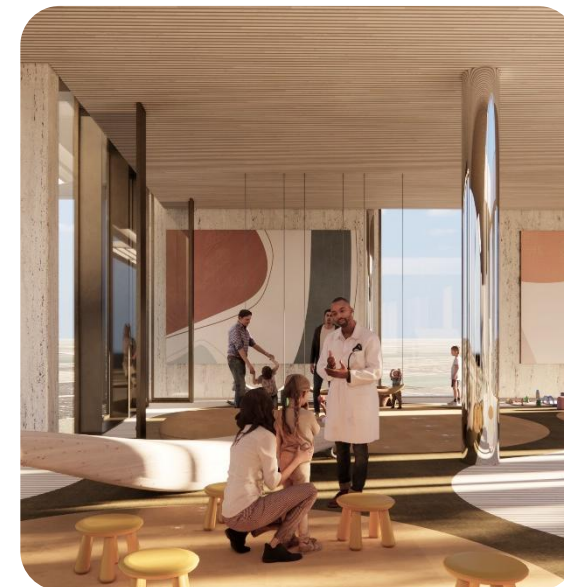
PROGETTO CMR

INFIRE



MI.CA.HO.

The human dimension, high technology and centrality of the patient: these are the driving forces behind the Misericordia Cancer Hospital - MI.CA.HO. – in Trani (Apulia). The project intends to overcome the traditional hospital model to face the new dynamics of these places, which inevitably call for a large transformation. The result is a flexible functional system, which promotes the interdisciplinarity between the departments, in an environment that is deeply connected with the surrounding nature, conveying a new and different idea of “healthcare” centered on the Human Being.



ISMETT 2

Palermo – Italy

56,000 sqm Hospital

2021 >>> under construction

Use: Healthcare

Design Architect: Renzo Piano Building Workshop

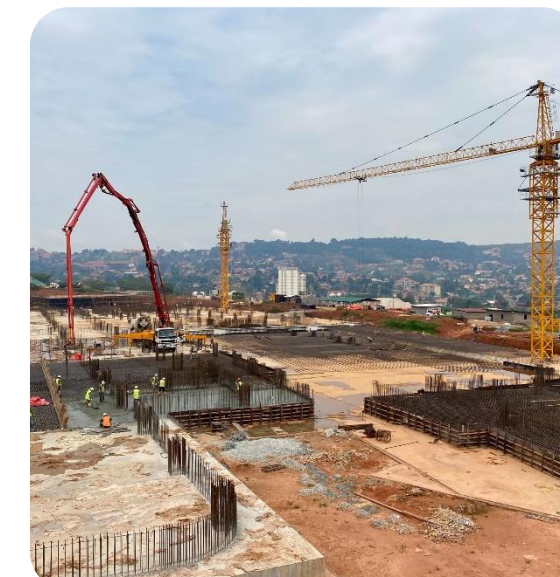
PROGETTO CMR

INFIRE



ISMETT 2

ISMETT 2, located in Carini near Palermo, is a center of excellence with 256 beds, including 42 in intensive care and 214 in sub-intensive care. Designed to treat chronic diseases and severe infections, it will integrate advanced technologies such as artificial intelligence and machine learning for personalized care. The hospital aims to become a point of reference in the Mediterranean region, with a particular focus on patients from Italy and North Africa. The collaboration with UPMC and its proximity to the Ri.MED Research Center will foster innovation and biomedical research. A green park will surround the facility, creating a therapeutic and welcoming environment for patients and staff.



Malpensa Hub

DHL Express Italy

Malpensa (VA) – Italy

46,000 sqm Land area

21,000 sqm Buil area

2021

Use: Logistics, Storehouses, Office



PROGETTO CMR

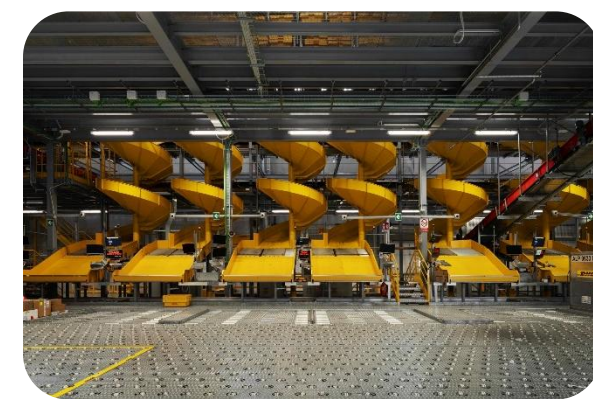
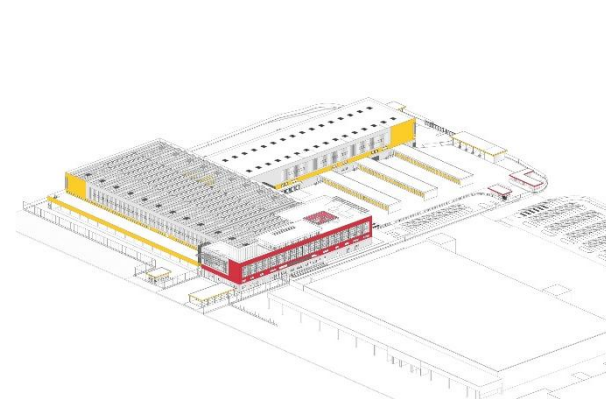
PROGETTO D&B

INFIRE



DHL EXPRESS ITALY MXP HUB

The new DHL Express Italy operational building in Malpensa, the fourth-largest in Europe, is a mix of technology, sustainability, innovation, suggesting a completely new way of conceiving and carrying out logistics. It is not only a place dedicated to sorting, but an integrated space that promotes corporate culture and mission through highly evocative, efficient and functional spaces where people can perform their work in the best and safest way. The distinctive feature is the Connector, an open space that connects the logistic and office areas, allowing for a continuous exchange between two environments that had hitherto always been separated.



Hotel

Private Client

Milan – Italy

2,700 sqm

Under construction >> 2025

Use: Hospitality

In collaboration with Chiara Caberlon

PROGETTO CMR

PROGETTO D&B

INFIRE

STAIN ENG.





HOTEL

The new hotel in the heart of Milan will cover an area of 2,700 sqm across 4 floors, featuring 59 rooms, a restaurant on the top floor, and various other services. The property, a boutique hotel with a strong and contemporary character, is designed to attract urban globetrotters who come to Milan to experience the vibrant energy of the city center, the beating heart of the European Capital of Fashion and Design.



Hotel

Private Client

Milan – Italy

2,200 sqm

Under construction >> 2025

Use: Hospitality

In collaboration with Studio Simonetti

PROGETTO CMR

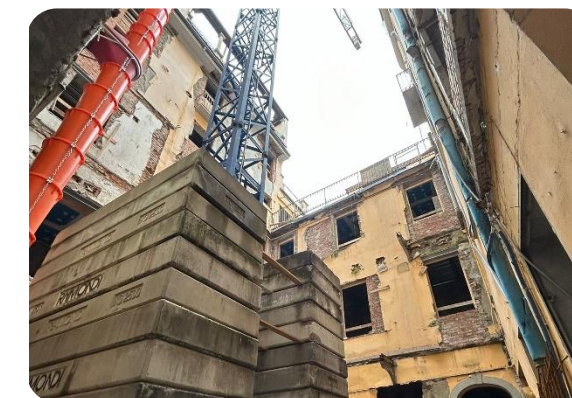
AGEVOLA

INFIRE



HOTEL

The hotel, located in a 2,500 sqm building in the heart of Milan, features 28 apartments that combine the comfort of hotel services with the exclusivity and privacy of private spaces. The offerings range from studios with a living area and fully equipped kitchen to luxurious suites with generous dimensions. The classic-contemporary design highlights the building's historic heritage, situated near the ancient Roman forum, while preserving the distinctive Giallo Milano plaster. Public amenities include a bar with a view of the street and a restaurant with an outdoor terrace in the internal courtyard, surrounded by greenery.



PROGETTO CMR

Integrated design, shaping spaces for people



PROGETTO CMR
MASSIMO ROJ ARCHITECTS

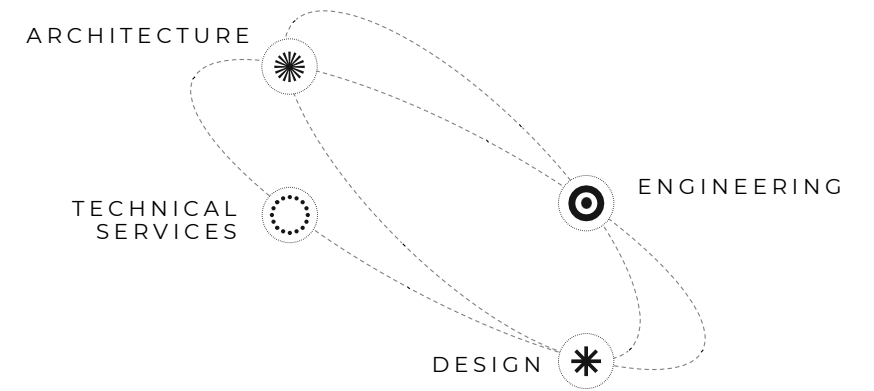
Progetto CMR, founded in 1994 and part of the Progetto CMR International Group, is the leading Italian company specializing in integrated design – architecture, engineering, and design. Thanks to a multidisciplinary team of professionals from 20 different nationalities – architects, engineers, space planning experts, project managers, designers, sustainability experts, and technicians – the company, headquartered in Milan with offices in various cities worldwide, follows each project from the initial analysis of the client's needs to the final realization.

It offers consultancy services ranging from architecture and urban planning to product design and interior design. In 2024, Progetto CMR received the prestigious **Compasso d'Oro ADI** award for **CELLIA®**, the patented interactive façade. The company is also a partner of the **European Architect Network (EAN)**.

Overview

MORE THAN 30 YEARS OF EXPERTISE.

Delivering innovative, customized, and cutting-edge solutions, Progetto CMR's growth has been defined by the continuous development of expertise and a focus on specialization, resulting in a broad portfolio of business units that meet the diverse needs of clients across various sectors.



NUMBERS

25+
CONSTRUCTION
SITES UNDERWAY

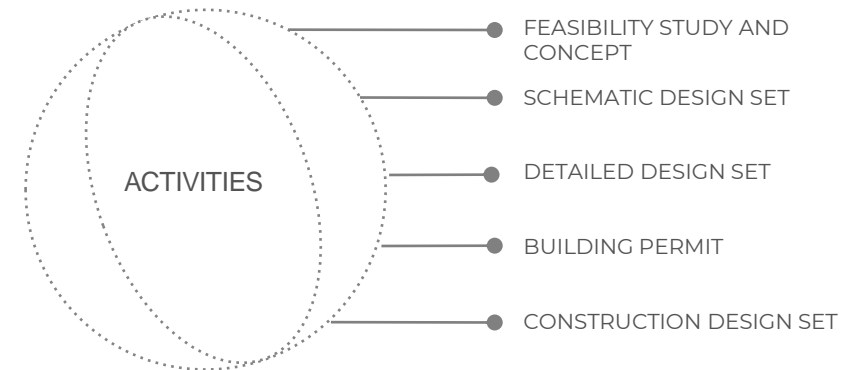
1500+
CLIENTS

50+
INTERNATIONAL AWARDS
AND RECOGNITIONS

40+
MILLIONS OF SQUARE METERS
OF BUILDINGS CONSTRUCTED

7+
MILLIONS OF SQUARE METERS
OF OFFICE SPACE

260+
MILLIONS OF SQUARE METERS
OF MASTERPLANS DESIGNED



BUSINESS UNITS



WORKSPACE DESIGN



INDUSTRIAL & LOGISTIC



HEALTHCARE



RETAIL DESIGN



EDUCATIONAL



PRODUCT DESIGN



HOTEL DESIGN



URBANPLANNING

SERVICES



BUILDING DESIGN



ENGINEERING & CONSTRUCTION



INTERIOR DESIGN

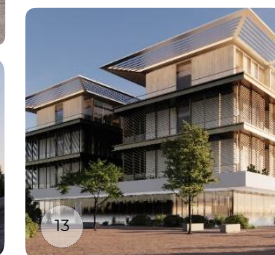
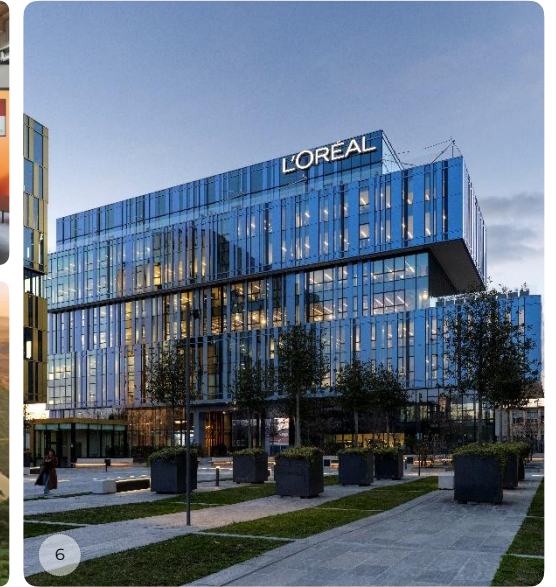
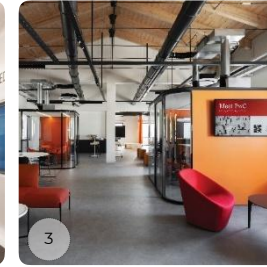
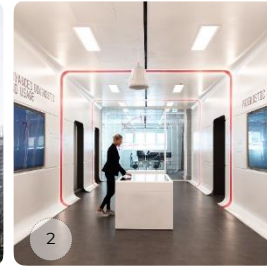


HEALTH & SAFETY

Projects

THE BEST OF

- 1 Unipol, De Castilia 23, Milan
BUILDING DESIGN
- 2 Leonardo Elicotteri, Hub, Varese
WORKSPACE DESIGN
- 3 PWC Hub, Monza
WORKSPACE DESIGN
- 4 Udine University, Udine
EDUCATIONAL
- 5 Xiantao Big Data Valley, Chongqing - China
MASTER PLANNING
- 6 L'Oreal Italia Beauty Hub, The Sign District, Milan
BUILDING DESIGN
- 7 Q8 HQ, Rome
WORKSPACE DESIGN
- 8 Artemide, Eggboard
PRODUCT DESIGN
- 9 KPMG HQ, Rome
WORKSPACE DESIGN
- 10 Milan New Stadium Masterplan
MASTER PLANNING
- 11 Palazzo Milano, Taipei
RESIDENTIAL
- 12 BNP Paribas - Findomestic HQ, Florence
BUILDING DESIGN - WORKSPACE DESIGN
- 13 MI.CA.HO., Trani
HEALTHCARE
- 14 NH Collection, Palazzo Victoria, Verona
HOSPITALITY



SPORTIUM

Creating places for sports emotions

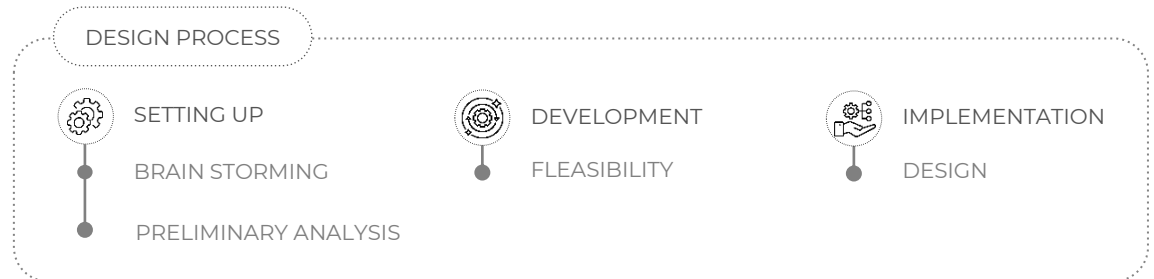
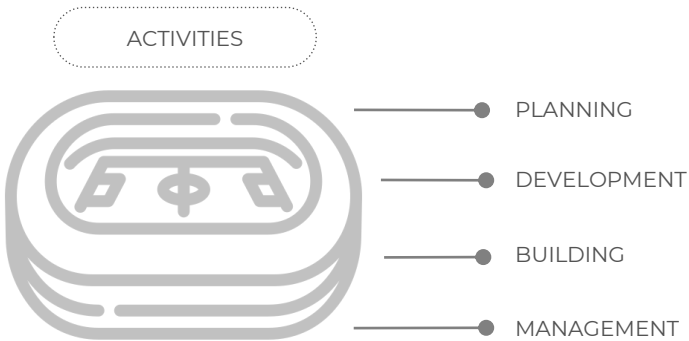
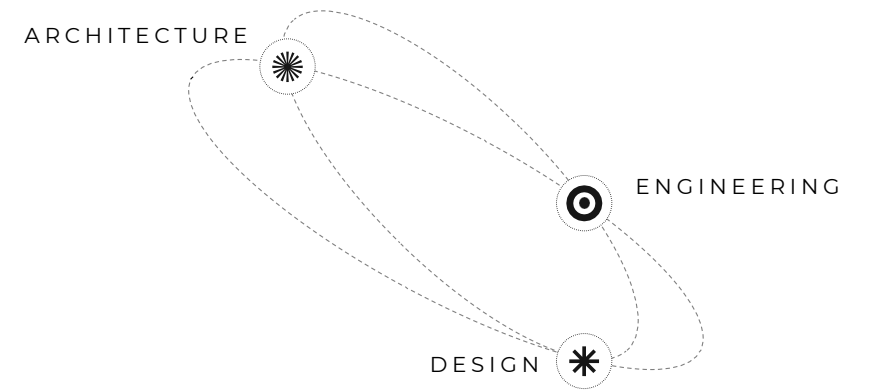


Sportium is a company specialized in the design, planning, and development of modern, functional, and sustainable sports facilities, where space quality, technology, and digitalization are combined to deliver excellent results for all users of the sports structures. Sportium offers an innovative product that combines design with technical, economic, and financial consulting.

Overview

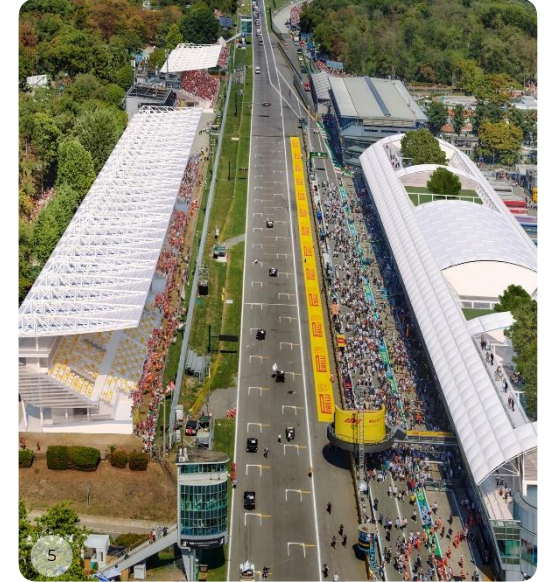
SHAPE YOUR SPORT VENUE IDEAL

Modern and functional sports facilities are designed to host major sports entertainment events: hubs of attraction and socialization open seven days a week. The projects are tailored to encourage public attendance and generate revenue: from shopping to dining, entertainment to hospitality, creating new resources for the cities that host them.



Projects

THE BEST OF



1 Stadio dei Pini, Viareggio (LI)

2 Sondrio Arena, Sondrio

3 Acinque Ice Arena, Pools and Ice Rinks, Varese

4 New Rugby Center, Cernusco sul Naviglio (MI)

5 Monza Autodrome Grandstands, Monza

6 Cagliari New Stadium, Cagliari

7 Cittadella dello Sport, Genoa

8 New Sport Center, Artistic Gymnastics - Track & Field, Brescia

9 Swimming Stadium, Taranto

10 Bocconi Sport Center, Milan

PROGETTO DESIGN & BUILD

Designing and creating the spaces of the future



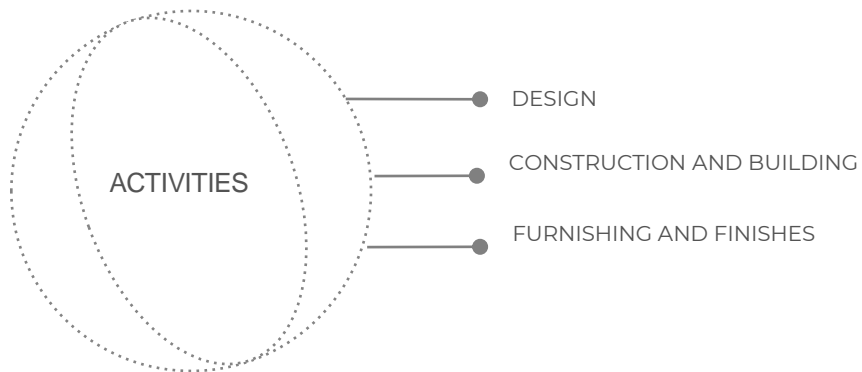
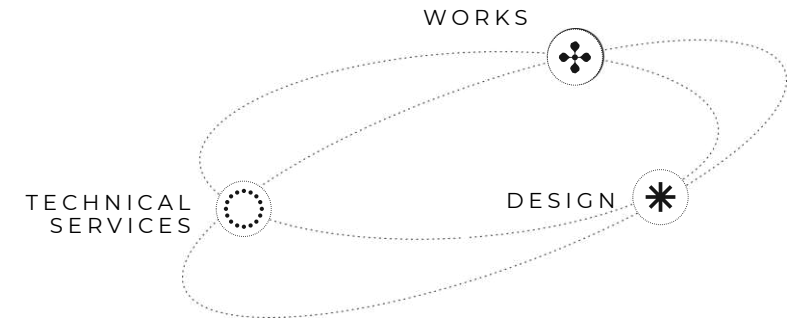
PROGETTO DESIGN & BUILD
INTEGRATED SOLUTION

Progetto Design & Build is a company dedicated to creating high-level workspaces. It works daily with renowned brands, offering strategic consulting on the evolution and use of work environments. The company relies on proven research based on cutting-edge theories of behavioral economics and environmental psychology, encompassing all the main industry trends. By providing an integrated service, it ensures a tailored product and an experience focused on the uniqueness of each client.

Overview

CREATIVE DESIGN & CONSTRUCTION

Specializing in the creation of high-level workspaces, the company collaborates with top global brands, offering strategic consulting on workspace evolution. Through integrated design and implementation, it provides tailored solutions and a unique experience, ensuring long-term competitiveness and value.



UP150 WORK IN HEALTH

UFFICIO PROATTIVO 150 THE REAL WORKPLACE REVOLUTION

WHO

It is a Research Project conceived and coordinated by Progetto Design & Build together with UNIMI – Università degli Studi di Milano.

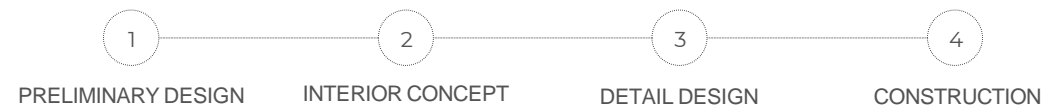
HOW

Defines a revolutionary office concept that allows people to do light/moderate physical activity during the workday.

WHY

Improves the mental and physical well-being of people at work by counteracting sedentariness through workout stations designed according to a specific program.

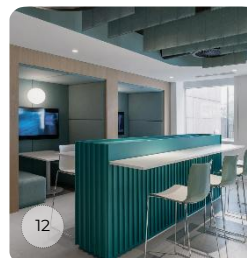
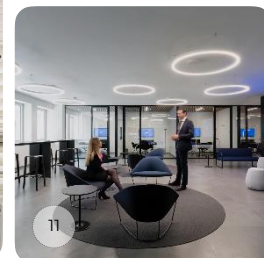
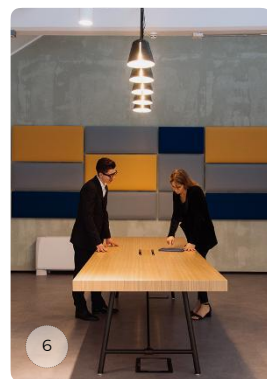
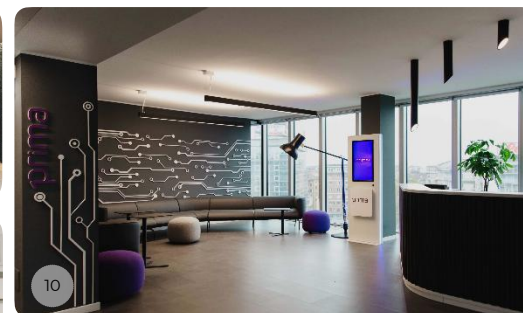
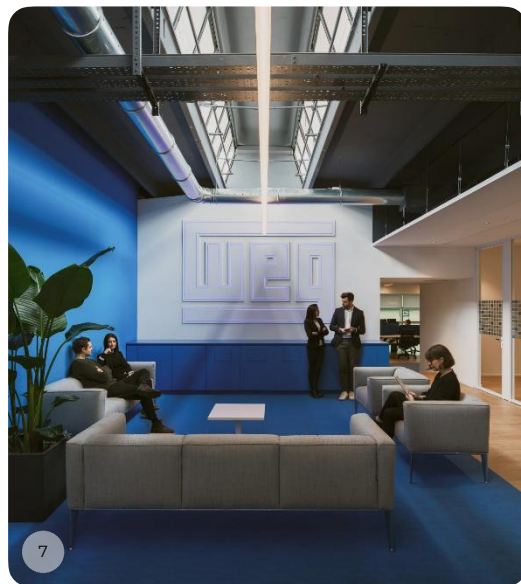
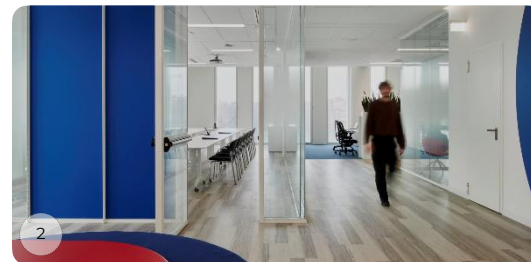
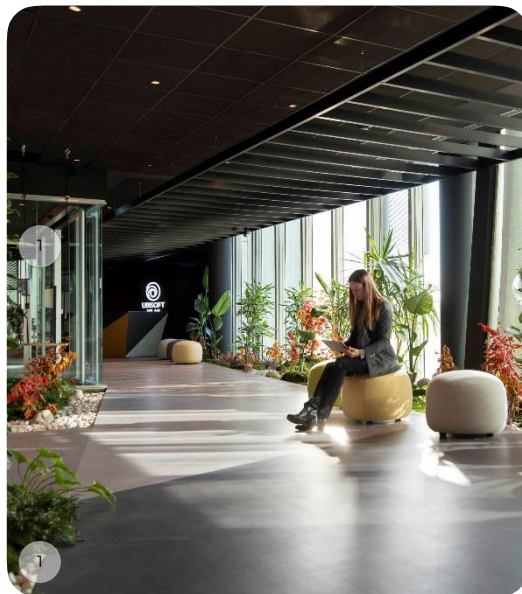
DESIGN PROCESS



Projects

THE BEST OF

- 1 Ubisoft HQ, Milan
- 2 Air Liquide HQ, Milan
- 3 Honegger HQ, Milan
- 4 Private Client, Milan
- 5 BIP HQ, Milan
- 6 Avvale HQ, Milan
- 7 WEG HQ, Lissone (MB)
- 8 Hotel - Private Client, Milan
- 9 IMCD HQ, Milan
- 10 Prima Assicurazioni HQ, Milan
- 11 KPMG, Rome
- 12 Q8 HQ, Rome





DONTSTOP
architettura

DONTSTOP ARCHITETTURA

Exploring contemporary living, designing timeless spaces

DONTSTOP Architettura is a design studio with specific expertise in the residential sector, exploring all aspects of contemporary living. Its team oversees the entire process of design and construction, offering strategic thinking and customized solutions.

Overview

SHAPING PERSPECTIVES, LIVING SPACES

The studio manages the entire process of design, development, and project execution in the residential sector, providing innovative and tailored solutions for every type of need.

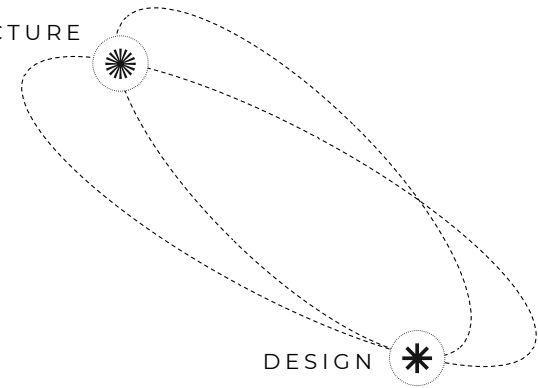
ACTIVITIES



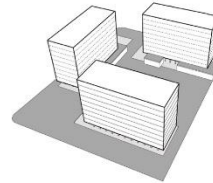
- CONCEPTUAL DESIGN AND MASTER PLANNING
- ARCHITECTURAL DRAWINGS AND DOCUMENTATION
- SITE ANALYSIS AND PLANNING
- SUSTAINABLE DESIGN AND GREEN BUILDING PRACTICES
- INTERIOR ARCHITECTURE AND SPACE PLANNING

ARCHITECTURE

DESIGN

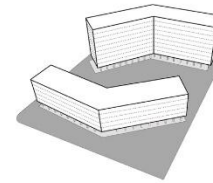


DESIGN PROCESS



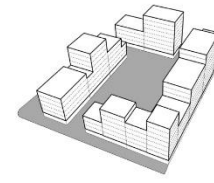
1

CONTEXT ANALYSIS



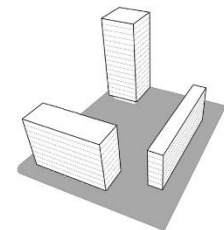
2

LAYOUT FLEXIBILITY



3

PROJECT DEVELOPMENT AND TECHNOLOGIES



4

COMPLETED PROJECT

Projects

THE BEST OF



- 1 Cascina Merlata, Milan
- 2 Bergamo Prossima, Bergamo
- 3 Palazzo Marino, Milan
- 4 Corte Certosa, Milan
- 5 Abitare in Maggiolina, Milan
- 6 Torre Licosa, Salerno
- 7 Social Co-Living 080, Barcellona
- 8 Villa Santa Croce, Alassio (SV)

AGEVOLA 360

We design, create, and facilitate innovation



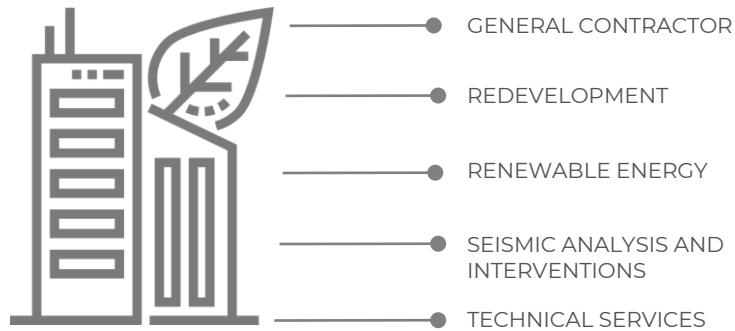
Specialized in retrofit works of the built heritage, Agevola 360 positions itself as the sole point of contact throughout all stages of the redevelopment process. It also conducts specific research on building envelopes and facades and provides support to clients in the financial aspects related to property efficiency improvements.

Overview

WE FACILITATE INNOVATION.

Combining technical expertise, innovative design, and creativity, the company creates unique buildings through tailored solutions that add both aesthetic and economic value. Clients are supported throughout the entire process, from design to execution, specializing in real estate projects ranging from new constructions to the refurbishment of existing buildings, with a strong emphasis on energy sustainability and comprehensive consulting services.

ACTIVITIES

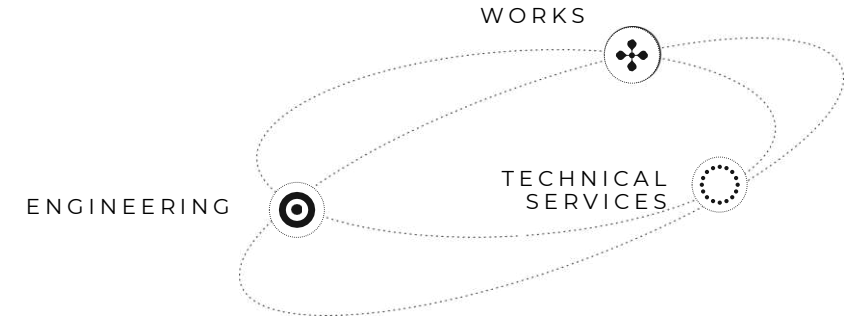


SERVICES

- 1 **RENOVATION** of residential, office, hospitality, and logistics buildings.
- 2 **ENERGY REFURBISHMENT**, supported by current fiscal incentives.
- 3 **INSTALLATION OF PHOTOVOLTAIC SYSTEMS** to create energy communities—groups of buildings (public, private, residential, or industrial) that generate and share clean, renewable energy, taking advantage of tax incentives.
- 4 **SERVICES** for the redevelopment of earthquake-affected areas and seismic risk reduction interventions.

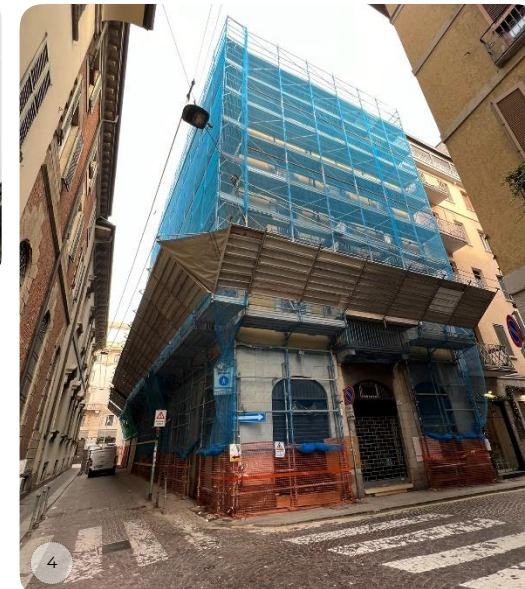
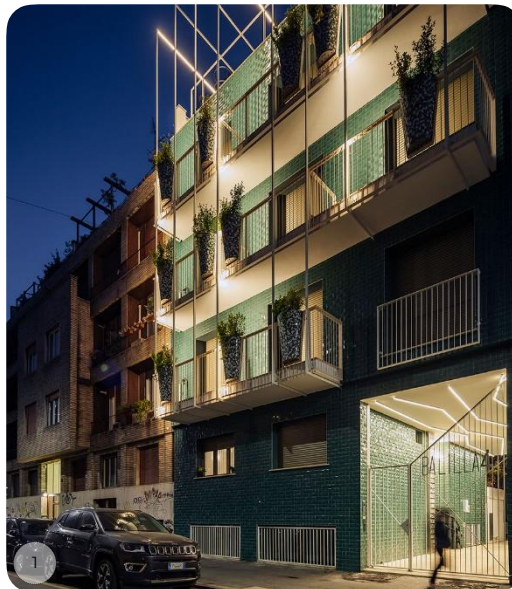
APPROACH

- LISTENING AND ENGAGING** with the client to create a tailored plan, leveraging available tax incentives.
- PRELIMINARY DESIGN AND DEFINITION OF THE WORK**, with well-defined timelines shared with the client.
- SELECTION OF SUPPLIERS**, with a focus on quality guarantees and adherence to delivery deadlines.
- EXECUTION PHASE** with qualified and precise operators.
- TURNKEY DELIVERY AND MANAGEMENT** of tax-related paperwork.



Projects

THE BEST OF



- 1 Balilla 14, Milan
RESIDENTIAL BUILDING
- 2 Murillo 44, Milan
RESIDENTIAL BUILDING
- 3 La Foglia, Segrate (MI)
RESIDENTIAL BUILDING
- 4 Private Client, Milan
HOSPITALITY
- 5 Merano, Baranzate (MI)
RESIDENTIAL BUILDING
- 6 Il Meridiano, Vigevano (PV)
RESIDENTIAL BUILDING
- 7 Miramare Hotel, Rapallo (GE)
HOSPITALITY
- 8 I rustici di Santa, S. Margherita Ligure (GE)
NEW CONSTRUCTIONS



INFIRE

Fire Safe Engineering
Engineering and Performance-Based Solutions for Maximum Safety



InFire

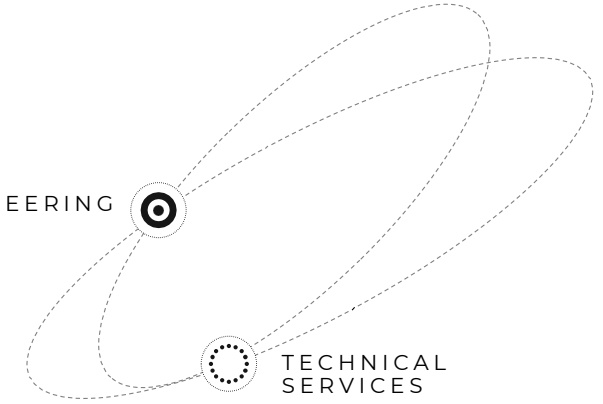
InFire, a company specialized in fire safety engineering, is led by engineer Diego Cecchinato, who serves as Partner, CEO, and Technical Director. The company boasts a significant international track record developed through projects carried out in Europe, the United States, and Turkey. InFire positions itself in the market as the ideal partner for integrated design and fire prevention projects, managing the entire process from project review to the final documentation submission and site inspection.

It also handles projects requiring advanced specialist practices, such as fluid dynamics simulations and advanced evacuation studies, facilitating more flexible architectural solutions and cost savings of up to 80%.

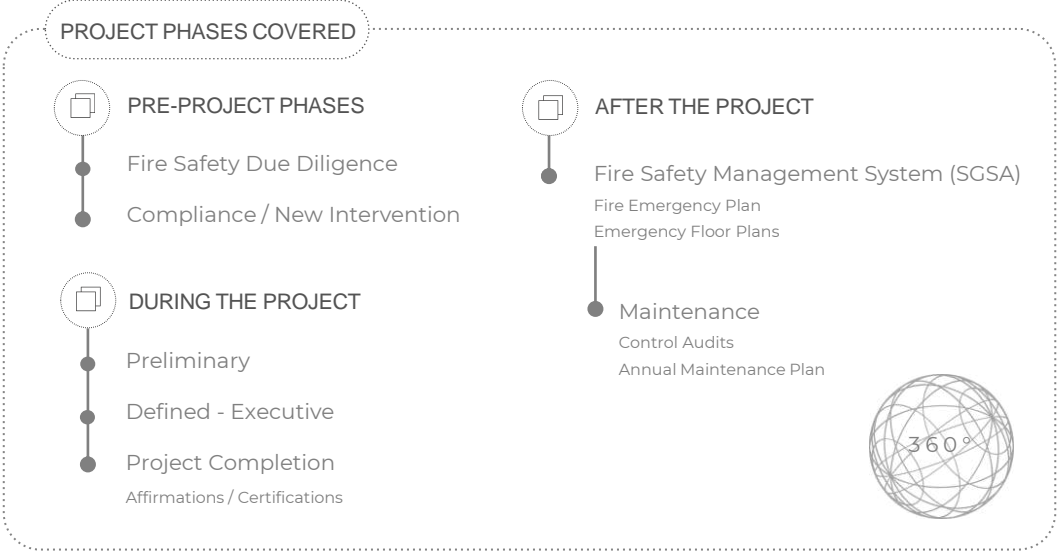
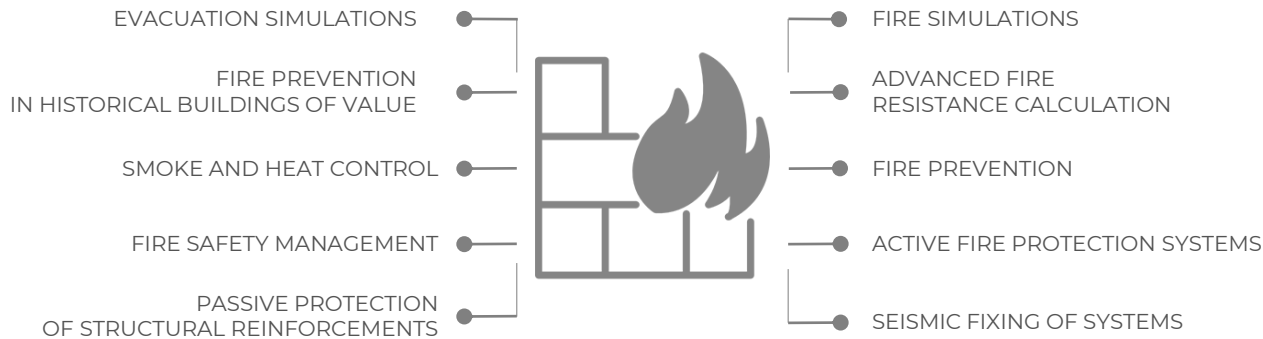
Overview

FIRE SAFETY ENGINEERING

Specialized in advanced fire safety design and consulting, the company applies performance-based Fire Safety Engineering methods to protect human life, property, and the environment. By following the entire process, from project analysis to final documentation and site inspection, it offers integrated design and fire prevention solutions. This approach enables advanced simulations, evacuation studies, and flexible architectural solutions, achieving cost savings of up to 80% without compromising safety standards.



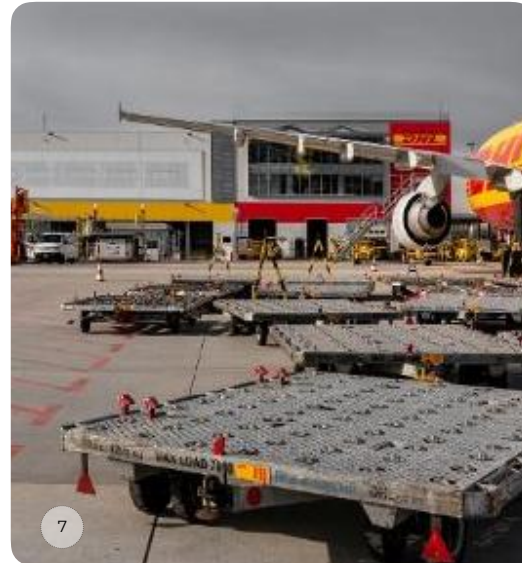
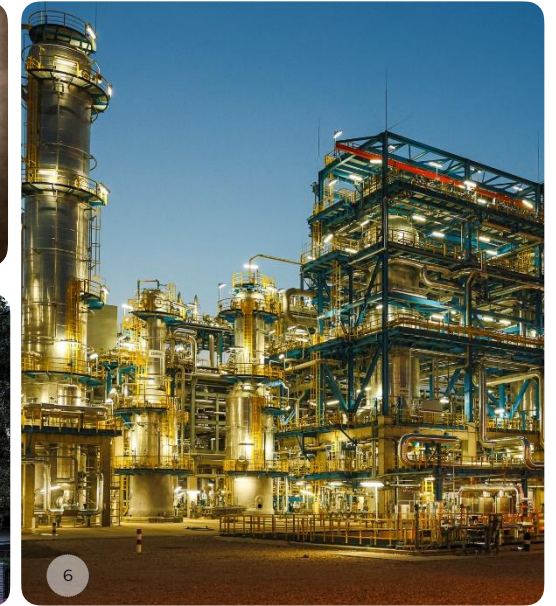
SERVICES



Projects

THE BEST OF

- 1 Avvale HQ, Milan
WORKSPACE
- 2 Sondrio Arena, Sondrio
SPORT
- 3 G. Marconi Airport, Bologna
RETAIL
- 4 Abitare in Maggiolina, Milan
RESIDENTIAL
- 5 Student Housing Viale Brenta, Milan
RESIDENTIAL
- 6 Tiszaújváros Oil&Gas, Hungary
OIL & GAS
- 7 DHL Express Italy - Malpensa Hub, Malpensa, Varese
LOGISTIC
- 8 Entopan Innovation Hub, Tiriolo (CZ)
BUILDING - WORKSPACE
- 9 Airport, Trieste
TRANSPORT INFRASTRUCTURES
- 10 Paring Garage, Milan
TRANSPORT INFRASTRUCTURES
- 11 Brennero Tunnel, Bolzano (IT) - Innsbruck (AT)
TRANSPORT INFRASTRUCTURES
- 12 ISMETT 2, University of Pittsburgh Medical Center, Palermo
HEALTHCARE
- 13 Tinexta HQ, Milan
WORKSPACE



ENERGYSAVE

Innovative Engineering Solutions for Sustainable, Energy-Efficient Buildings

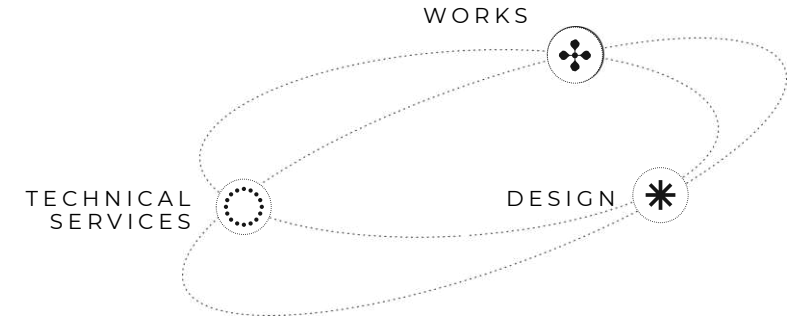


EnergySave is an engineering services company focused on residential, commercial, tertiary, and plant engineering sectors. With a team formed by highly qualified professionals who have collaborated for over a decade, EnergySave is committed to offering clients a wide range of innovative and customized solutions. The company addresses various market needs, always with a focus on energy optimization, renewable energy use, and maximizing public incentives.

Overview

ENERGY CONSULTANTS DESIGNED FOR THE FUTURE

Offering a wide range of innovative and tailored solutions, focusing on energy optimization, renewable sources, and maximizing public incentives, while providing comprehensive consulting in various fields, from residential and commercial construction to renewable energy, energy efficiency, and integrated systems, including permits, project management, and final commissioning.



ACTIVITIES



- ENERGY AND CIVIL RETROFITS AND SAFETY UPGRADES
- ENERGY RETROFITTING FOR INDUSTRY 5.0
- THERMAL ACCOUNT 2.0

SERVICES



ENGINEERING SERVICES

- Energy diagnostics, building pathology, HVAC, electrical systems
- Renewable energy, building automation, fire engineering
- Civil/structural engineering, acoustics, non-destructive testing (Thermography, Blower Door-Test)
- BIM MEP modeling



ARCHITECTURE SERVICES

- Façade rendering, construction details, municipal permits
- Site supervision, safety coordination, sustainability (LEED, BREEAM, CASACLIMA NATURE)
- Laser-scan surveys, BIM architecture modeling

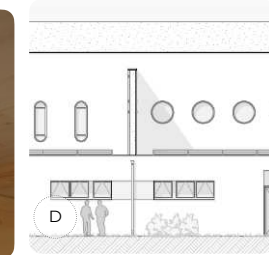
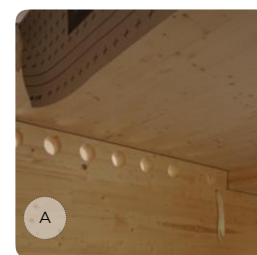
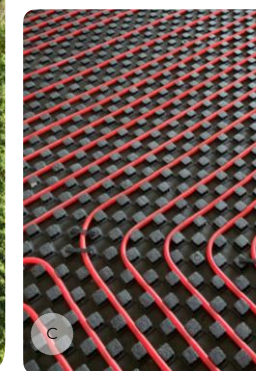
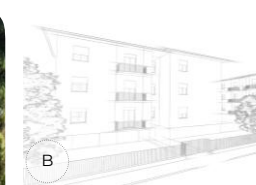
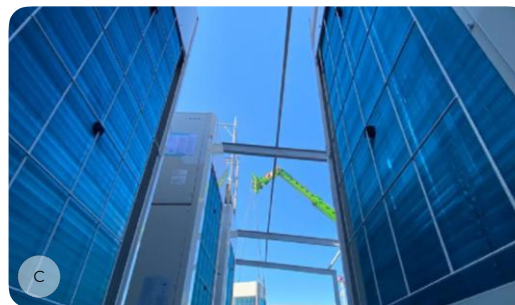
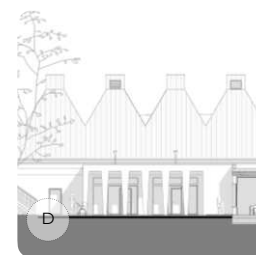
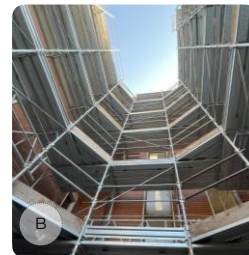


CUNSLTING SERVICES

- Feasibility plans, energy service and EPC development
- Economic plans, tax deductions, thermal account 2.0
- Industry 5.0, assembly meeting support

Projects

AREAS



- A Real Estate Private Sector
- B Residential Buildings
- C Service Sector
- D Public Administration

STAIN ENGINEERING

Shaping the Future with Innovative Engineering Solutions



STAIN Engineering S.r.l. is an engineering company founded through the collaboration of a group of designers with expertise and experience in various technical sectors within plant engineering. Established in 1996 in Trento, it opened a second office in Milan in 2018. Thanks to a policy of constant research, innovation in tools, methods, and design procedures, the company has doubled its turnover in recent years and has become a key partner in plant engineering for major national architectural firms.

The company is also distinguished by its commitment to research and development, and through a dedicated department, it develops specific software in a native BIM environment for design, quantity takeoff, and internal quality control of projects. STAIN has been ISO certified since May 2005, both in its professional field of expertise and for the BIM modeling and computation software it produces in-house.

Overview

INNOVATIVE ENGINEERING SOLUTIONS

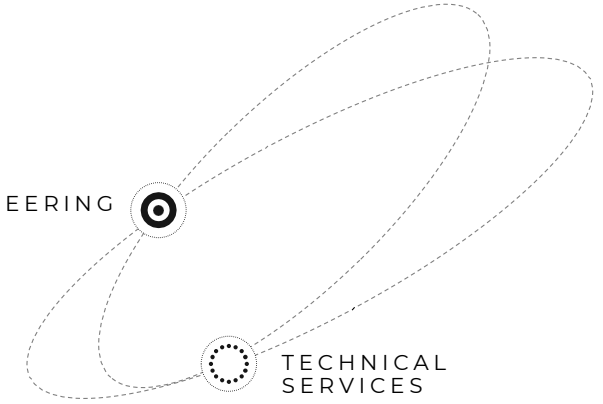
Specializing in engineering design and consulting services, with expertise in electrical and mechanical systems, fire safety, and energy efficiency. Committed to enhancing service quality and optimizing production processes through innovative methodologies and solutions.

SERVICES



- MECHANICAL SYSTEMS
- ELECTRICAL SYSTEMS
- SPECIAL SYSTEMS
- FIRE PROTECTION SYSTEMS

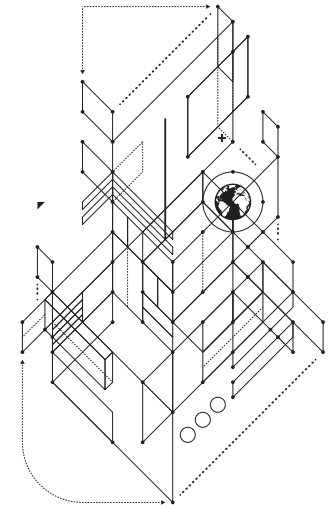
ENGINEERING



TECHNICAL SERVICES

BIM SPECIALISTS

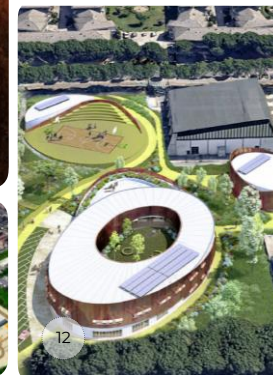
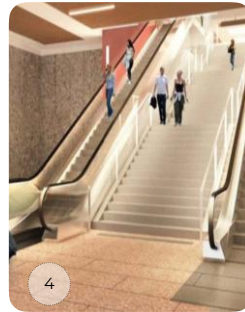
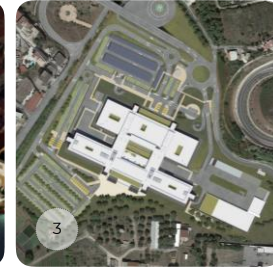
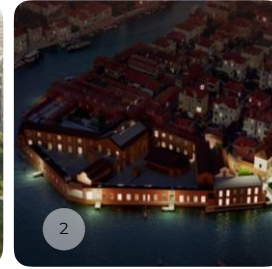
- BIM DESIGN AND MANAGEMENT
- ADVANCED TECHNOLOGIES
- PROCESS AUTOMATION
- TRAINING AND SUPPORT
- MULTIDISCIPLINARY COORDINATION
- CONSTRUCTIVE AND AS-BUILT DESIGN
- MAINTENANCE AND FACILITY MANAGEMENT



Projects

THE BEST OF

- 1 Bosco della Musica, Milan
CULTURE
- 2 The Glass Factory, Venice
HOSPITALITY
- 3 Ospedale della Piana di Goia Tauro, Palmi (RC)
HEALTHCARE
- 4 Automatic metropolitan, Turin
TRANSPORT INFRASTRUCTURES
- 5 New School of Engineering – Innovation Hub, Padua
EDUCATIONAL
- 6 BEIC (European Library of Information and Culture), Milan
CULTURE
- 7 Garibaldi Executive Buildings, Milan
BUILDING
- 8 New Eni Business Center, San Donato Milanese, Milan
BUILDING
- 9 Frejus Tunnel, Bardonecchia (IT)- Modane (FR)
TRANSPORT INFRASTRUCTURES
- 10 New PH306 Station, Stuttgart
TRANSPORT INFRASTRUCTURES
- 11 New Mercato Ortofrutta, Milan
RETAIL
- 12 School Complex, Silvi Marina (TE)
EDUCATIONAL
- 13 Dertona Arena, Tortona (AL)
SPORT
- 14 New Hospital, Fermo (MC)
HEALTHCARE
- 15 Cinema - Metropolitan Theatre, Piombino (LI)
CULTURE



The end is just
the beginning

MILAN

Via F. Rüssoli 6
20143 Milan
+39 02 58.490.91
info@progettocmrinternational.com
progettocmrinternational.com